



DYNAMIC TOUCH COMMUNICATOR

DIALOG **X3pro**

eyetracking





***Each person, regardless
of the degree of
disability, has the right
to influence, through
communication, the
conditions of its own life.***

*National Joint Committee for the Communication Needs of Persons with Severe Disabilities, 1992.

Presentation and intended use

The **Dialog x3Pro** is a 13" touchscreen and Electromedical Device with Windows 10 operating system.

It is designed to intercept and meet the technical and communication needs of people with more impaired neuromotor abilities and/or dystonia, particularly suitable to conditions such as ALS, SMA, and Tetraplegia.

It is realized to be used with a binocular eye pointing system that enables alphabetic communication through the pupil movement. It also integrates a system for environmental control (home automation) and PC management in the Windows environment.

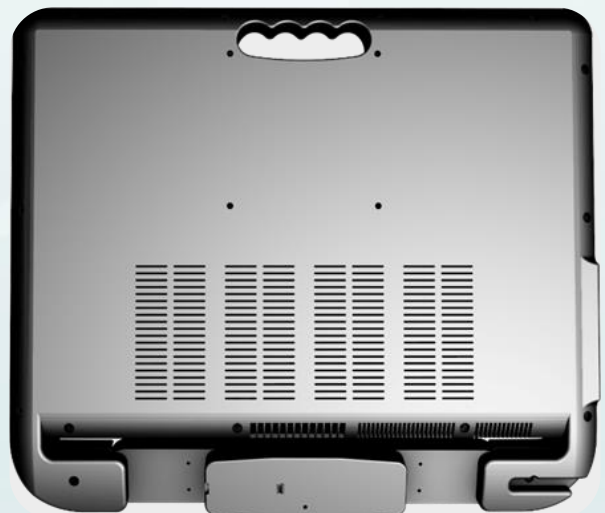


Main features

The Dialog x3Pro, made of impact-resistant materials, it is lightweight, functional and it has a comfortable handle that allows it to be easily carried.

The VESA and the quick-release plate allow to place the device, quickly and easily, on mounts for beds, wheelchairs, tables or walls.

In the upper front part, there are two powerful speakers that enable the reproduction of voice synthesis, music or sound.



Interfaces and home automation

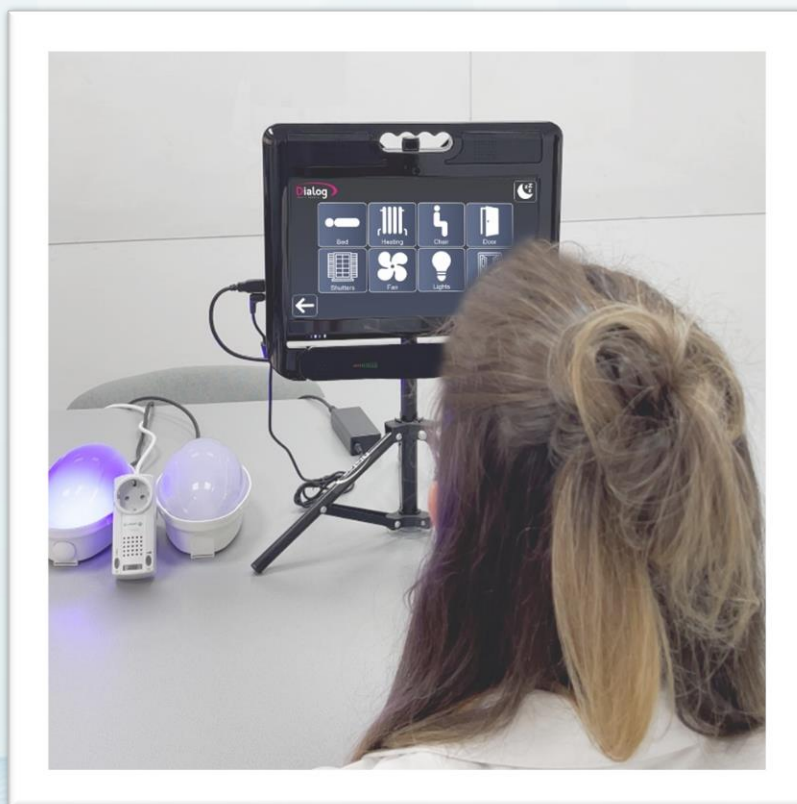
On the side, however, there are the power input and all other input/output, connection and audio/video interfaces.

The essential five other inputs allow the direct insertion of as many sensors/switches, simplifying accessibility to the device.

The Dialog x3Pro has been designed to allow the environmental control via different connection systems.

It has, in addition to WIFI and Bluetooth, an infrared sensor, located at the top rear.

It is also possible, upon request, to add an additional interface with a radio frequency wireless protocol, which enables the control of a further range of systems and devices.



Software

Dialog AAC software, integrated into the device, is suitable for people with complex communication needs as well as those with speech and writing disorders.

It enables the creation of Augmentative and Alternative Communication (AAC) structures in a simple and intuitive way, transforming classic paper notebooks into customizable and interactive works.

It is also possible to create works for teaching, personal autonomy, tests with reports, social stories, keyboards and inclusive games.

In addition to the Dialog AAC software, **Matrix AAC** software is also installed, which enables the integration of functions related to environmental control within the home and the PC management in the Windows environment.

Matrix AAC provides easy access to the Internet, e-mail, and various social networks, and allows users to write documents and read files in PDF and Microsoft Word format, perform mathematical calculations, listen to music, view pictures, watch videos.



Accessibility

The device has different accessibility methods to meet different patient needs related to pathology or disorders.

Its touchscreen display makes the device sensitive to touch. The touchscreen technology is recommended when there is the possibility of upper limb movement.

Dialog x3Pro can be used via sensor interface and/or tracking devices of a particular body part if there are residual movements.

Finally, Dialog x3Pro, in the absence of residual motor movements, can be used via eye movement.

In this regard, it is possible to optionally buy our **DEYE** binocular eye tracking, which perfectly integrates with Dialog x3Pro Communicator to obtain a unique device with a compact and elegant design.



Technical specifications

- **Display:** 13" LED Technology Wide Touchscreen
- **Resolution:** 1920 x 1080
- **Size:** 36 x 31 x 3.0 cm
- **Integrated switch 5 inputs:** (accessibility to the device with any sensor: buttons, switches, etc...)
- **Weight:** 1.4 Kg
- **RAM:** 8 GB DDR4
- **Memory:** SSD 250GB
- **Bluetooth:** 4.2
- **Wi-Fi:** 802.11 AC
- **Webcam:** integrated 1.3mpx
- **Processor:** Intel (R) Core™ i7 – 6500U CPU @ 2.50GHz 2.59 GHz
- **Operating System:** Windows 10 a 64-bit, processor based on x64
- **Pen and touch:** Touch support with 10 touch points
- **VESA:** 10 cm x 7,5 cm
- **Battery:** 8000mAh 6 cells
- **Easywave radiofrequency:** optional
- **Sim card interface:** optional
- **Input:** 3 USB 3.0 ports - audio and video output - microphone

Accessories



Suitcase



Charger

Optional Accessories



Measuring tape



USB Cable



DEye



Dialog Ausili S.r.l.

Via Praga 20, Zona P.I.P.

Marrubiu 09094 (OR) Italia

+ 39 0783 - 1925658

info@dialogausili.com

www.dialogausili.com

